

éénentachtig



一

一

nederlandse
shogi bond

nr. 73

Inhoudsopgave

Order in the Universe (2)	2	Books Review	17
Nederlands Kampioenschap	3	Efficiency	17
George Hodges active as ever	3	Visit of Tokunaga Hiroyuki	18
2de Internationale Shogi Forum	4	Shogi Agenda	18
The Mental Factor (2)	8	Oplossingen Tsume-Shogi	20
An interview with Habu	9	Current Title Holders	20
Castles (2)	11	Toernooipartijen	20
Haagse club	11	Adressen	22
Shogi rules (4)	12	Tsume-Shogi	23
Toernooiuitslagen	13		

Redactioneel

In oktober zal het 2de Internationale Shogi Forum in Tokyo plaatsvinden. De kwalificatie-toernooien hiervoor zijn inmiddels achter de rug, en Mathijs Litjens en Henk Haaksma zullen samen met onze Nederlands Kampioen Marc Theeuwen ons land vertegenwoordigen op dit Forum. Belangrijk nieuws uit Japan is de 4-0 overwinning op Maruyama waarmee Moriuchi de nieuwe Meijin is geworden. In de volgende 81 zullen we meer aandacht aan Moriuchi en de gespeelde partijen besteden.

In augustus zal het Europees Kampioenschap terugkeren naar het jeugdinternaat RIKAB in Brussel. Bondsleden kunnen zich tegen een gereduceerde prijs via de bond aanmelden (via Tom Kau of ondergetekende). Meer details hierover vinden jullie op blz. 17. Voorwaarde is wel dat men *betalend* lid van de bond moet zijn ... Diegenen die nog graag op niveau willen oefenen voor dit EK kunnen op 15 en 16 juni deelnemen aan het 7de Rikai toernooi in Sittard.

Veel lees- en Shogi-plezier,

Hugo Hollanders
mei 2002

Colofon

EENENTACHTIG is een uitgave van de Nederlandse Shogi Bond (NShB) en verschijnt vier keer per jaar. Lidmaatschap NShB: €20.25 per jaar (tot 18 jaar €11.25). Abonnement niet-bondsleden: €11.25 per jaar. Losse nummers: €2.25 excl. verzendkosten. Subscription in and outside Europe: €11.25 incl. P&P.

Lid worden van de Nederlandse Shogi bond geschiedt automatisch na overmaken van het lidmaatschapsgeld op de rekening van de NShB (zie adressenpagina). **Het lidmaatschapsgeld dient te worden voldaan voor het einde van de eerste maand van elk kalenderjaar.**

Omslagontwerp: Henk Kooy

Order in the Universe (2)

Peter Blommers

Henk Haaksma made the personal comment that Japanese pros not only think in order but also in quantity because they accumulate numbers of wins in the Jun-i-sen, and the knockouts are used there only as a tie-break method, and accordingly, only the tie-break methods differ between East and West (SOS and SODOS in the West). It looks that way but it is basically not true. Even when accumulating wins the order principle is retained, as for instance when the top three players in a particular group scored 10, 8 and 8 wins, and the top two are promoted, only the one with 10 wins and the higher ranking (in terms of placement in the group, not in terms of grade) one with 8 wins are promoted. The knockout tie-break is only used for determining the challenger to the Meijin in the A-group, when necessary. I told Henk that also in the sometimes occurring 4 player all-play-all blocks in preliminary rounds (as in the Shogi Forum), these are really mini knockouts with extra rules. In the first round in such a block two winners are produced. These are matched against each other, as are the losers. At the end of the second round one player has 2 points and is promoted to the next stage, one player has 0 points and is defeated and out of competition, and the two 1-pointers play a deciding game, the winner of which is also promoted to the next stage (usually a full knock-out) and the loser of which is also defeated and out of competition. So you have to score 2 wins in such a 4-player block.

A curious situation exists in the Free Pro Class. Players who demote from the C2-group in the Jun-i-sen become so-called Free Pros. They no longer compete in the Jun-i-sen but are also not forced into retirement. They continue pro play in all tournaments except the Meijin (= Jun-i-sen). When they score more wins than losses in one year in these other tournaments, they are allowed back in into the C2. Hugo Hollanders told me that Reijer Grimbergen on his internet page stated that Free Pros can never return, but this is not true. For instance, this year Ina Yāsuke 4-dan is allowed back in. The point is, as Mr. Onogi explained to me, that there are two types of Free Pros: those who demoted from the C2 and those who voluntarily stepped out, like Yonenaga and recently Nakahara (the top two players when I started to play Shogi 26 years ago). The latter group (marked with an asterisk in Shogi Sekai) can never return to the Jun-i-sen. That is tantamount to giving up all aspirations to ever become Meijin again. In effect, it is a form of semi-retirement.

Note from the editor: after closer inspection it turned out that I was mistaken. Reijer Grimbergen wrote the following to Shogi-L in 1996:

"In this week's Shukan Shogi there are also some new (or perhaps sometimes old) rules described regarding the mysterious free class. The rules are very complex and the translation below is only a first try. Any Japanese reader of Shukan Shogi who can fill in the blanks or correct my mistakes, please feel free to help me (and the readers) to figure out the rules of the free class:

- 1) It is from now on also possible to enter the free class from the sandan league. A player who has been runner-up twice to the two regular promoted players from the sandan league can, if he wishes, be promoted to 4-dan and enter the free class. However, if he wishes to stay in the sandan league, this is also allowed.
- 2) From the free class it is not possible to return to C2 whenever one wishes (as I previously thought). A free class professional has to play at least 30 official games in a year and have a winning average of 60% or higher. If a player plays more than 30 games a year, he may choose the best 30, but then he needs a percentage of 65% or higher. If a free class professional fails to meet that requirement for ten years, he will lose his status of free class professional and will be forced to retire from professional shogi.

... [I]t seems that for professionals who enter [the free class (and I do not know better than that they do so voluntarily), the professional career is virtually over. Winning more than 60% of the games is difficult for any professional, let alone for a professional almost dropping out of C2."

Nederlands Kampioenschap 2002

Zaterdag 23 februari vond het NK Shogi plaats in Woerden. In totaal 12 deelnemers bonden de strijd aan voor de titel Nederlands Kampioen Shogi. Tevens kon de winnaar zich direkt plaatsen voor het Internationale Shogi Forum dat later dit jaar in Tokyo zal plaatsvinden. De finale ging tussen de twee op dit moment sterkste in Nederland verblijvende spelers, Marc Theeuwen en Arend van Oosten. Na een spannende eindstrijd prolongeerde Marc Theeuwen zijn NK titel. Na wins t in 1996, 1998, 2000 en 2001 is dit zijn 5de titel in 7 jaar tijd.

De ALV die dag kon door de afwezigheid van de penningmeester/secretaris niet doorgaan. Bij monde van de voorzitter werd de ALV verschoven naar 20 april, na afloop van het kwalificatie toernooi voor het Shogi Forum.

Uitslag NK 2002

M. Theeuwen	4 dan	-----+			
J. Blommers	1 kyu	-----+			
T. Gorissen	2 dan	-----+			
T. Kau	3 kyu	-----+			
J. Stuijbergen	7 kyu	-----+			
F. Roquas	2 dan	-----+			
J. Oosterwijk	3 dan	-----+			
P. Blommers	3 kyu	-----+			
R. Koymans	1 kyu	-----+			
H. Haaksma	1 kyu	-----+			
F. Wouters		-----+			
A. van Oosten	4 dan	-----+			

1. M. Theeuwen

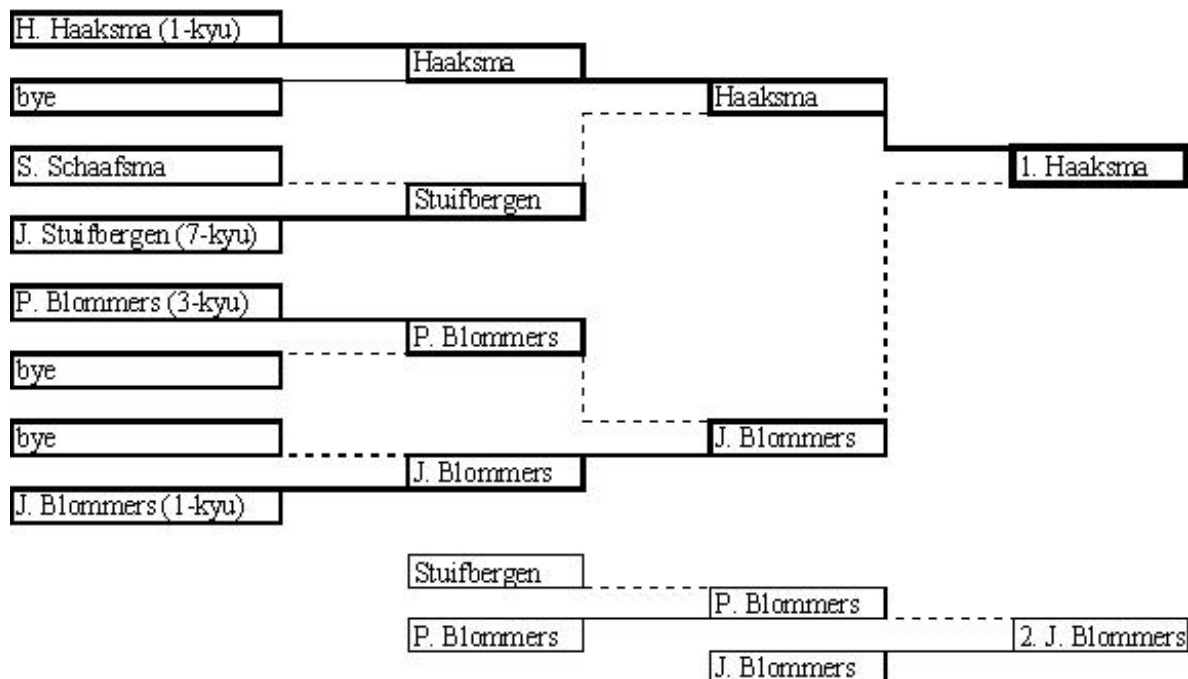
3.

2.

George Hodges active as ever

Peter Blommers

George Hodges recently published two new booklets, an update of his Middle Shogi Manual and a new collection of Shogi variants, this time including Kyokutai Shogi (36x36) of which the complete rules are now known. John Fairbairn told me in September 2000 that new old manuscripts pop up at a rate of 1 manuscript per year so there is still hope the picture of these old variants gets more and more complete. Both booklets cost €50. Please contact George Hodges through internet or at P.O. Box 77, Bromley, Kent BR1 2WT, UK.



Voorts heeft de Nihon Shogi Renmei per land dat deelneemt aan het team kampioenschap nog een team manager uitgenodigd. Bij het ter perse gaan van dit nummer was nog niet bekend wie dit zal zijn. De rol van de team manager is vooral om deel te nemen aan de Internationale Shogi Meeting op 19 oktober, waar in brede zin gediscussieerd zal worden over de mogelijkheden om Shogi buiten Japan verder te verspreiden. Verder zal de team manager in direct contact staan met de organisatie van het Shogi Forum voor het oplossen van alle voorkomende problemen.

De volledige lijst van deelnemers aan het Shogi Forum is als volgt:

- Team manager: ...
- Vertegenwoordiger Categorie A: Marc Theeuwen ('captain')
- Vertegenwoordiger Categorie B: Mathijs Litjens ('subcaptain')
- Vertegenwoordiger Categorie C: Henk Haaksma

Het Shogi Forum zal plaatsvinden van woensdag 16 oktober t/m maandag 21 oktober 2002. Het wordt georganiseerd door de Nihon Shogi Renmei en staat onder auspiciën van het Japans Ministerie van Buitenlandse Zaken, het Japans Agentschap voor Culturele Zaken en All Nippon Airways.

De toernooiopzet van het team kampioenschap is als volgt. De 8 deelnemende landen worden door loting ingedeeld in twee groepen. Vervolgens spelen de teams tegen elkaar waarbij de Categorie A (B/C) speler tegen de Categorie A (B/C) speler van het andere team speelt. In de tweede ronde spelen de winnaars en de verliezers van de eerste ronde tegen elkaar. Het team met een 0-2 score is uitgeschakeld voor de verdere ronden. In de derde ronde spelen beide teams met een 1-1 score tegen elkaar. Het team dat verliest is uitgeschakeld voor de verdere ronden. In de vierde ronde speelt het team met een 2-0 score (resp. 2-1 score) uit de eerste groep tegen het team met een 2-1 score (resp. 2-0 score) uit de tweede groep. De winnaars spelen vervolgens in de finalepartij voor de eerste plaats. Verder zullen de 'captains' van elk van de 8 landen die deelnemen aan het team kampioenschap deelnemen aan het individuele kampioenschap. Ook hierin zal op een overeenkomstige wijze als in het team kampioenschap worden gespeeld.

Een uitgebreid verslag over het Shogi Forum zal t.z.t. in de 81 worden opgenomen.

De lijst van voorlopige deelnemers is:

Teamkampioenschap (3 spelers per land):

Brazilië : nog niet bekend
China : nog niet bekend
Duitsland : Boris Mirnik (3-dan), Jochen Drechsler (2-dan), Karl Wartlick (1-kyu)
Engeland : Stephen Lamb (4-dan), Les Blackstock (3-dan), Demis Hassabis (1-kyu)
Japan : nog niet bekend
Nederland: Marc Theeuwen (4-dan), Mathijs Litjens (3-dan), Henk Haaksma (1-kyu)
Zweden: Thore Angqvist (1-kyu), Peter Kaneko (3-dan), Nils Carlsson (3-kyu)
Verenigde Staten : Larry Kaufman (5-dan), Mac Ito (3-dan), Alex Trotter (3-kyu)

Individueel kampioenschap (1 speler per land):

Frankrijk : Eric Cheymol (4-dan)
Italië : Giuseppe Baggio (4-kyu)
Noorwegen : Richard Bjerke (1-kyu)
Oostenrijk : Gert Schnider (3-dan)
Oekraïne : Artem Kolomiyets
Paraguay : nog niet bekend
Rusland : Serguei Belov (2-dan)
Thailand : nog niet bekend

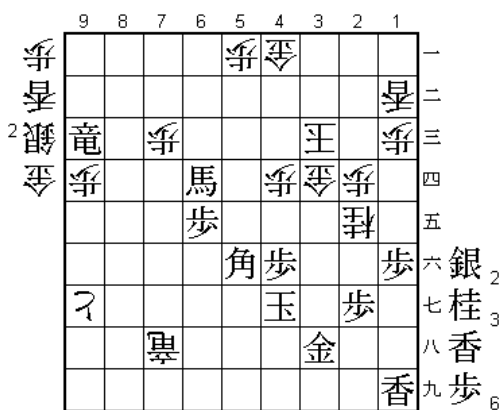
Kwalificatie-toernooi Shogi Forum

Ronde 1: Boekschoten - Gorissen

Redactie: opgemerkt moet worden dat deze partij zich grotendeels in byoyomi heeft afgespeeld. Afgezien van de vele turbulente ontwikkelingen gedurende de partij, vraagt toch vooral de tsume (in 17 zetten) voor wit bij zet 83 jullie aandacht. Onmogelijk om te vinden in byoyomi, maar wellicht ook thuis met een kopje koffie op de bank. De oplossing voor deze tsume is elders in deze 81 verstoppt. Succes!!

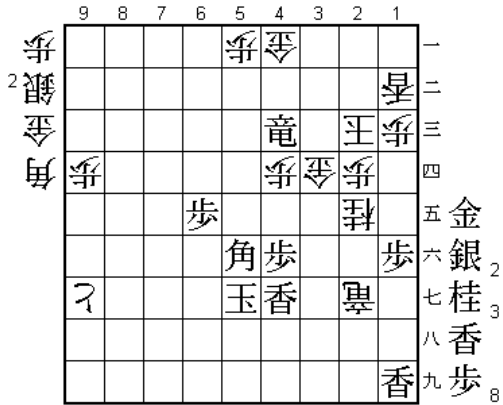
1.P7f P3d 2.P6f P8d 3.S7h S6b 4.R6h K4b
5.K4h K3b 6.K3h G65b 7.G65h B3c 8.K2h
K2b 9.B7g L1b 10.P6e P4d 11.P4f P5d 12.P6d
G5c 13.Px6c+ Sx6c 14.S3h P'6d 15.P3f K1a
16.N3g G4c 17.G4g S2b 18.S6g P7d 19.S6f
N7c 20.P5f P9d 21.P1f G3a 22.P7e N6e
23.Sx6e Px6e 24.Rx6e S'6d 25.R6h Px7e
26.P'6e S5c 27.P5e P8e 28.Px5d S6x5d 29.P6d
P7f 30.B8h P8f 31.P'5e P'6g 32.Rx6g P'6f
33.Bx6f S6e 34.P6c+ Sx6f 35.Rx6f S4b
36.Rx7f Px8g+ 37.R7a+ R8f 38.+P5b +Px9g
39.N'5d S5a 40.+Px5a Rx8i+ 41.+P4a Gx4a
42.+Rx4a B'7d 43.+Rx4c Bx4g+ 44.S'3b
+Bx3h 45.Gx3h G'3a 46.Sx3a Sx3a 47.G'3i
N'2d 48.S'2e S'3b 49.+R5b S'4c 50.+R6a P'5a
51.B'7e K2b 52.+Rx9a +Rx9i 53.G'4b Sx4b

54.Nx4b+ Bx4b 55.Bx4b+ G'4a 56.+B5c L'5b
57.+B6d N'4b 58.S'6c N3c 59.Sx2d Px2d
60.L'5d +R6i 61.P'6e Lx5d 62.Px5d L'5b
63.P5c+ Lx5c 64.+Bx5c +R5h 65.+B7e S'4g
66.G'4h Sx3h+ 67.G3x3h +R7h 68.+B6d P'6b
69.Sx6b G'5b 70.S5c+ P3e 71.Px3e P'3f
72.N'3d Nx3d 73.Px3d Px3g+ 74.G4x3g N2e
75.S'3c Sx3c 76.Px3c+ Kx3c 77.L'3f N'3d
78.+Sx4c Gx4c 79.Lx3d Gx3d 80.+R9c P'7c
81.B'5f Nx3g+ 82.Kx3g N'2e 83.K4g



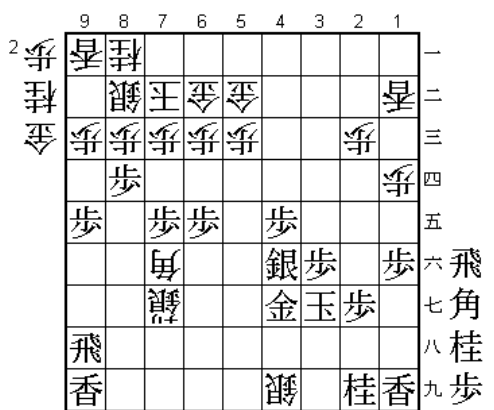
Tsume in 17: wit aan zet

- 83...+Rx3h 84.K5g +Rx2g 85.L'4g L'5b
- 86.+Rx7c P'6c 87.+Rx6c G'5c 88.+Bx5c Lx5c
- 89.+Rx5c G'4c 90.G'2c Kx2c 91.+Rx4c Wit geeft op



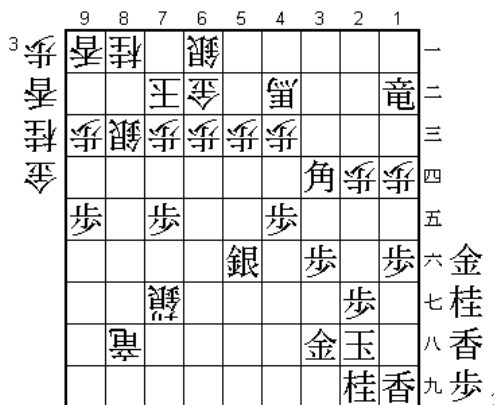
**Kwalificatie-toernooi Shogi Forum
Ronde 2: Boekschoten - Litjens**

- 1.P7f P3d 2.P6f R3b 3.R6h G6b 4.G65h K6a
- 5.P4f P3e 6.G4g P1d 7.P1f R3d 8.S7h K7b
- 9.B7g S4b 10.K4h G45b 11.S6g N3c 12.P6e
- P4d 13.P8f S4c 14.P8e S8b 15.R8h B1c 16.P8d
- Px8d 17.Rx8d P'8c 18.R8h L1b 19.P9f S5d
- 20.S5f B2d 21.S2h B1c 22.P9e P4e 23.Px4e
- P3f 24.Px3f Sx4e 25.Sx4e Nx4e 26.P'4f R8d
- 27.P'8e R7d 28.S'7e R5d 29.G5h S'5e 30.Px4e
- S4f 31.Gx4f Bx4f 32.S3g B5e 33.S6f B2b
- 34.G4g G'6g 35.N'4f R7d 36.P7e R2d 37.P4d
- Gx7g 38.Sx7g P'4e 39.S'3e Px4f 40.Gx4f Rx4d
- 41.Sx4d Bx4d 42.P'4e Bx7g+ 43.Nx7g S'6f
- 44.B'1a B'7i 45.R5h S6g+ 46.R9h Bx5g+
- 47.K3h N'5d 48.B5e+ +Sx7g 49.G'4g Nx4f
- 50.+Bx4f +Bx4f 51.Sx4f B'7f 52.P8d S'4i
- 53.K3g



Beter lijkt direkt Bx9h+ met de dreiging van een torendrop op 3h.

- 53... P2d 54.Px8c+ Sx8c 55.R1 h N'3d 56.R'3a
- G'3h 57.Rx3h Sx3h+ 58.Kx3h Nx4f 59.K3g
- S'6a 60.Kx4f Bx6e 61.S'5f B8g+ 62.N'4d +B4c
- 63.Nx5b+ +Bx5b 64.N'4d N'5d 65.K3g +B4b
- 66.R2a+ R'3i 67.K2h Rx9i+ 68.B'3d P'4c
- 69.N3b+ +B5b 70.+Rx1b +R8h 71.L'3h L'4f
- 72.G3g L4h+ 73.+N4b +Lx3h 74.Gx3h N4f
- 75.G'3g Nx3h+ 76.Gx3h +Bx4b 77.G'4g



Onduidelijk is waarom zwart hier niet gewoon +Rx4b speelt.

- 77... +B3c 78.P3e +Bx3d 79.Px3d L'3e 80.L'3g
- Lx3g+ 81.Nx3g P'3f 82.B'5a G'5b 83.Bx2d+
- B'4i 84.P'6h Px3g+ 85.G3x3g +Sx6h 86.K1g
- N'3a 87.P3c+ P'2b 88.+Rx2b P'2c 89.+Px2c
- Nx2c 90.+Rx2c +S5h 91.P'6h P'3f 92.G4x3f
- +S4h 93.+R2b +S3h 94.G4g B5h+ 95.K2f P'2c
- 96.+Bx2c +Bx6h 97.L'3e +R8d 98.P'3d +B5h
- 99.K2e P'3a 100.P3c+ L'5d 101.P'3d Lx5f
- 102.G44f +S3g 103.Kx1d +Sx3f 104.Gx3f
- +Bx3f 105.K1c +Bx3e 106.K1b G'2e 107.P1e
- G'2d 108.+B1c Gx3d 109.+Px3d +Rx3d
- 110.+Bx3e Gx3e 111.S'2c +Rx2c 112.+Rx2c
- B'3d 113.G'2d Bx2c 114.Gx2c S'3d 115.G2b
- S'3c 116.N'1d R'2e 117.B'1c Rx2g+ 118.P'2d

An interview with Habu¹

From the May 13 may to May 21, Habu participated in an IM norm chess tournament in Paris. Joel Lautier conducted the following interview, with the kind assistance of Mariko Sato for the translation, on the 15th of May 2002 at the NAO Chess Club in Paris.

Question 1: When and how did you learn to play chess?

About ten years ago, I bought a book on chess and learned the game on my own. It was a Shogi player, Mr Murooka [the same person who first introduced me to Shogi! - J.L.], himself a passionate chess player, who aroused my interest in this game. And then six years ago, I started playing games on a regular basis with Mr Jacques Pineau [Jacques Pineau is a Frenchman who has been living in Japan for many years, with a chess playing strength of approximately 2250. He is also the president of the Asaka Chess Club, located in the suburbs of Tokyo - J.L.]. We play an average of one or two games a month, and I also read chess magazines to keep up to date. I have learned a bit of theory, but together with Mr Pineau, we have always tried to understand how to think in chess rather than just learn.

Question 2: That is still very little practice for such remarkable progress. What areas of chess do you find most difficult to master?

I find that the most difficult is to adapt oneself all the time to the changing rhythm of a chess game. A position may demand either fast and energetic action, or much quieter positional play, or something else still. Having to switch from fast play to a slower one and vice versa is the most unsettling for me. In Shogi, the rhythm of a game is much more stable. The opening is usually rather slow, whereas endgames are always a speed race [what Shogi players call "endgames" are in fact mating attacks! There is no such thing as endings in Shogi, since taken pieces can come back into the game at any moment, thus the game does not tend towards simplification - J.L.]. The rhythm of Shogi never slows down, it only accelerates.

Question 3: Do you find chess more, or less complex than Shogi?

Before I learned how to play chess, I thought the two games had to be very similar. I think now that they are very different. In chess, it's important to have a good position, whereas in Shogi, it's more important to be the first one who delivers checkmate! I couldn't say which of the two is more complex.

Question 4: Do you have ambitions in chess? Do you plan to become a Grandmaster?

Most of all, I wish to be able to play chess during my free time, and have the chance to play Grandmasters. If you ask me whether I think I can become a Grandmaster, then I honestly don't know. If I keep progressing and I realise that it is within my reach, then I shall try.

Question 5: Who is your favorite chess player?

Bobby Fischer. My first chess books were about him and his games are the ones I studied most.

Question 6: Do you think chess could become popular in Japan?

Among developed countries, Japan is perhaps the only one where chess is little known. Nonetheless, the Japanese like very much this kind of games, they have excellent natural abilities for them. However, there is a great lack of information about chess in Japan. If a tournament with the participation of the best players in the world was organized there, it could have a strong impact on the publicity of chess in my country.

¹ From the NAO Chess Club website (<http://www.nao-cc.com/>): (text enclosed by [.. - J.L.] is a comment from Joel Lautier).

Question 7: Do you think chess and Shogi are sports?

Chess is certainly a sport. For Shogi, it is a bit different, since it is part of the Japanese traditional culture, along with the tea ceremony and Ikebana, the Japanese floral art. During the Edo era [from 1603 until 1868 - J.L.], there were only three families who played Shogi, and the Master of the game was called Meijin. However, this title could only be inherited, and it has only been a century since the title of Meijin is contested in a real competition.

Question 8: The world of chess is very prone to conflicts whereas the Shogi world seems much more united and organised. Have you any advice to give FIDE?

(Laughs) No, no, I cannot give any advice! But it is much simpler for the small Shogi federation to remain united, as it only comprises 130 professional players. Moreover, these are all players from one country, which avoids many of the political problems within FIDE. The great size of FIDE makes consensus more difficult, all the more since it is partly made of people who are not chess professionals but have other activities. The Shogi Renmei (the Shogi federation) is composed exclusively of professional players, active and retired, who also handle the whole organisation of tournaments and the contracts with the sponsors. It's actually the case in many other federations in Japan, namely in martial arts. A person who has never been a professional in a given field cannot be part of the federation that regulates it [a very healthy principle to meditate! -J.L.].

Question 9: How popular is Shogi in Japan?

Shogi has been very popular in Japan for a long time. Until 30 years ago, the Japanese people used to play in a room that led to the garden, traditionally reserved for this activity. Today, Shogi can be played everywhere! The number of people who know the rules of Shogi can be roughly estimated at ten million, the number of those who play regularly must be around a hundred thousand.

Question 10: Let's talk about women! Do they play Shogi?

Yes, they also play Shogi. There are two separate professional categories for men and women. There are approximately fifty full-time women professional players (there are 130 among men). In professional competitions among men, only one or two women players can take part. This is only the case since seven or eight years ago, before that women could not participate in them. Over that period of time, these women have played about two hundred games against their male colleagues with a success rate of 30%.

Last question: Are computers a threat for Shogi?

In mating problems, called Tsume Shogi, the computer is already superior to the best players. In normal games, however, the computer is still far from the professional level. Its level can be compared to a 4-dan among amateurs [approximately 2300 strength in chess elo terms. The first dan among professionals starts after the amateur 6-dan. To get a rough idea, the best Shogi players in the world, including Mr Habu, have a ranking of professional 9-dan - J.L.].

Thank you for answering our questions and good luck!

Castles (2)

Peter Blommers

My brother Joost occasionally plays on the internet, and discovered strange ways of castling he never saw before: K8g and K9h, for instance. I replied to him that these are well-known, so in order to fill a gap in the knowledge a few short comments are appropriate:



Diagram 1 (Black). This is the Tenshukaku Mino. Tenshukaku means *castle tower*. In the endgame a White Silver drop is not a check and K9h is another surprisingly strong escape square for the King.



Diagram 2 (Black). This is the Yonenaga King, simply because Yonenaga played it often. The King is one step away from the Bishop's diagonal, which is an advantage in a *semeai* (mutual attack). If White plays P8d then P7e Px7e P=7f Px7f Gx7f P=7d R6i. This kind of counterattack is often called the King's Head Vanguard Pawn Attack. The White attack over the 3-file draws the picture of a rice-cake.

Source: Shogi Castles a la carte (supplement Shogi Sekai January 2001). The reader should ignore my rice-cake line. My ability to translate Japanese idiom is naturally limited.

Haagse club

Peter Blommers

De competitie vordert gestaag, en heeft de handicapladder nagenoeg stilgelegd. De nieuwste blokjes-uitslagen zijn:

(jan)	Peter Blommers (3-kyu) - Frank Wouters (12-kyu)	9-1
(jan)	Jeroen Tiggelman (1-dan) - Joost Blommers (1-kyu)	6-4
(febr)	Jeroen Tiggelman (1-dan) - Joost Blommers (1-kyu)	7-3
(febr)	Joost Blommers (1-kyu) - Peter Blommers (3-kyu)	7-3
(febr)	Jeroen Tiggelman (1-dan) - Joost Blommers (1-kyu)	8-2
(mrt)	Jeroen Tiggelman (1-dan) - Joost Blommers (1-kyu)	6-4
(mrt)	Peter Blommers (3-kyu) - Frank Wouters (12-kyu)	9-1
(apr)	Jeroen Tiggelman (1-dan) - Joost Blommers (1-kyu)	7-3
(mei)	Peter Blommers (3-kyu) - Frank Wouters (12-kyu)	10-0

De winstpartij van Frank Wouters in het januari-blokje (maar al vorig jaar gespeeld) kwam door een illegale zet van mij (promotie van een zilver die achteruit ging maar nog niet in het promotiegebied stond), die van het maart-blokje was een echte overwinning, en ook buiten de clubcompetitie heeft Frank al eens van me gewonnen, gelijk-op. Zijn graad zit waarschijnlijk tussen 8 en 6-kyu in, maar interne clubpromotie gaat alleen via handicap-partijen en die spelen we nu nauwelijks.

Shogi rules (4)

Peter Blommers

Jan Stuifbergen at different occasions complained that players sometimes do not press the clock with the same hand they used to make their move, as is obligatory in chess. We still have no hard rules concerning this, but gentlemanhood should prompt players to follow the chess rule. In Japan, the tradition doesn't exist, as pro games have special time controllers and players never press clocks, while amateurs often play without clocks. So we really have no precedent nor really settled the matter.

At the Den Haag club, a dan player dropped a Bishop that could be captured without compensation against me, pressed his clock, then mumbled *Awell, that's not good* (Dutch *Aoneedakannie*), took back the move and pressed the clock on my side, and resumed thinking. In chess terms that would be a capital sin, but I said nothing not wanting to irritate him. Yet it was a competition game, though in our club competition even games are not scheduled, and part of loose sequences, so they are in fact just training games. I didn't care, but the rules problem is disturbance of competition (Dutch *Acompetitievervalsing*) as another player might object, maybe even that dan player when it would happen to him. The very same thing happened at the very first Quick Shogi Tournament we ever held, in the 1980s, in which I let Jan Oosterwijk take back a Bishop dropped in the same way, and I made the mistake of telling that to somebody after the game. Chris Bekker overheard my remark and immediately protested. *AJan himself would not be so kind to others*, he said. The point is, I knew I would probably have lost the game *Jan's blunder notwithstanding*, as I was very much weaker than him (being no chess player, and it is a well-known fact that chess players have a natural edge in Shogi). But Chris Bekker was Jan Oosterwijk's equal so he felt wronged. Any *possible* damage to opponents then of course is extremely welcome. The matter is difficult, as psychological, gentlemanly and formal aspects intermingle. The lost-touch rule is even more sensitive. It is clearly possible that you lightly lose touch but *continue to think and doubt* about the move and upon seeing the blunder take the piece and retract the move, *totally unconsciously*. The absence of a touch-move rule in Shogi enlarges this problem, at least makes it more gentlemanly oriented. I once saw a Snooker player in a top match on TV who told the umpire *>I touched it= while nobody had noticed.* *>Thank you, Steven=* was the umpire's reply. Apart from gentlemanhood, the solution is probably a practical one, like the *>sitting on your hands=* method while thinking. But this is easier said than done. Concentration plays a part in all this. It is difficult to stop thinking and often you see a blunder immediately *after* having made the move. Is the traffic light red or green at that point in time? That's the (psychological) issue. Recently I did do it myself: slightly losing touch of the piece while not giving up my psychological claim *>it's still my turn=*, in a friendly game of Go and Shogi against Frank Wouters, who didn't mind. Only then I realized how *personal* the problem is.

Toernooiuitslagen¹

Moskow Shogi Open: 2002-01-06

Nr	Name		Nat	Grade	ELO	1	2	3	4	5	6	7	Pts	+/-
1	Belov	Sergey	R	2 Dan	1653	10+	8+	2+	4+	3+	6+	5+	7	+33
2	Zapara	Victor	R	2 Kyu	1757	9+	3+	1-	6+	5+	8+	4-	5	-26
3	Spilev	Yuriy	R	3 Kyu	1487	11+	2-	10+	8+	1-	4+	9+	5	+12
4	Nikonov	Konstantin	R	2 Kyu	1488	7+	6+	5+	1-	8-	3-	2+	4	-13
5	Sakhabutdinov	Rustam	R		1113	13+	9+	4	10+	2-	7+	1-	4	+19
6	Suhanov	Il'ya	R	7 Kyu	1124	14+	4	13+	2-	11+	1-	8+	4	+20
7	Zabrodin	Alexander	R	14 Kyu	694	4-	14+	8-	13+	12+	5-	11+	4	+23
8	Makarov	Pavel	R	4 Kyu	1361	12+	1-	7+	3-	4+	2-	6-	3	-19
9	Nosovsky	Alexander	R	7 Kyu	1057	2-	5-	14+	11-	10+	12+	3-	3	-30
10	Fedoseev	Evgeniy	R		935	1-	12+	3-	5-	9-	13+	14+	3	-36
11	Metrevelli	Irina	R		609	3-	13-	12+	9+	6-	14+	7-	3	+25
12	Shevchenko	Olesya	R		477*	8-	10-	11-	14+	7-	9-	13+	2	
13	Shevchenko	Igor	R		400*	5-	11+	6-	7-	14-	10-	12-	1	
14	Kozelskih	Alexandeer	R		400*	6-	7-	9-	12-	13+	11-	10-	1	

Promoting V. Zapara to 1 Kyu, R. Sakhabutdinov to 8 Kyu, A. Zabrodin to 12 Kyu, E. Fedoseev to 11 Kyu and I. Metrevelli to 15 Kyu.

Dutch Championships, Woerden: 2002-02-23

Nr	Name		Nat	Grade	ELO	1	2	3	4	Pts	+/-
1	Theeuwen	Marc	NL	4 Dan	2078	0+	7+	5+	2+	4	+14
2	van Oosten	Arend	NL	4 Dan	2131	0+	10+	3+	1-	3	-5
3	Oosterwijk	Jan	NL	3 Dan	1954	0+	6+	2-	5+	3	+4
4	Kau	Tom	NL	3 Kyu	1314	0+	5-	7+	6+	3	+53
5	Roquas	Frans	NL	2 Dan	1753	11+	4+	1-	3-	2	-7
6	Koymans	Ron	NL	1 Kyu	1746	9+	3-	8+	4-	2	-16
7	Blommers	Joost	NL	1 Kyu	1374	8+	1-	4-	12+	2	+9
8	Gorissen	Theo	NL	2 Dan	1670	7-	11+	6-	9+	2	-26
9	Blommers	Peter	NL	3 Kyu	1330	6-	12+	10+	8-	2	+16
10	Haaksma	Henk	NL	1 Kyu	1637	12+	2-	9-	11+	2	-20
11	Stuifbergen	Jan	NL	8 Kyu	1051	5-	8-	12+	10-	1	-2
12	Wouters	Frank	NL		400*	10-	9-	11-	7-	0	

Swedish Championship Tournament, Stockholm: 2002-02-23/24

Nr	Name		Nat	Grade	ELO	1	2	3	4	5	6	Pts	+/-
1	Carlsson	Nils	S		1578	8+	11+	3+	6+	2-	4+	5	+62
2	Kaneko	Peter	S	3 Dan	1692	12+	5-	9+	11+	1+	3+	5	+14
3	Nilsson	Carl Johan	S	2 Dan	1901	7+	4+	1-	13+	8+	2-	4	-30
4	Danerud	Martin	S	2 Dan	1574	14+	3-	5+	10+	6+	1-	4	+14
5	Söderberg	Robert	S	2 Kyu	1549	15+	2+	4-	8-	10+	9+	4	-11
6	Hartman	Christer	S	1 Kyu	1628	9+	13+	10+	1-	4-	12+	4	-12
7	Gammelgård	Tor	S	8 Kyu	1100	3-	10-	15+	17+	13+	8+	4	+32
8	Palmblad	Jan Peter	S		1012	1-	17+	14+	5+	3-	7-	3	+40
9	Nordlander	Sven	S	9 Kyu	1002	6-	15+	2-	14+	11+	5-	3	+50
10	Rabe	Jan	S		1198	16+	7+	6-	4-	5-	0+	3	+4
11	Vidal	Anders	S	5 Kyu	1318	17+	1-	16+	2-	9-	13+	3	-6
12	Kristiansson	Per	S	7 Kyu	1064	2-	14+	13-	16+	15+	6-	3	+2
13	Palmgren	Jan	S	2 Kyu	1546	18+	6-	12+	3-	7-	11-	2	-61

1 Note: an * means that this player, having played less than 12 official games, has not yet an official grade.

14	Juntti	Tord	S	11 Kyu	780	4-	12-	8-	9-	0+	16+	2	-12
15	Ivarsson	Daniel	S		518	5-	9-	7-	0+	12-	17+	2	+7
16	Wredenberg	Daniel	S		507*	10-	0+	11-	12-	17+	14-	2	
17	Alfredsson	Lennart	S		400	11-	8-	0+	7-	16-	15-	1	-36
18	Hellberg	Henrik	S		400*	13-	0-	0-	0-	0-	0-	0	

Promoting N. Carlsson to 3 Kyu, T. Gammelgård to 7 Kyu, JP Palmblad to 9 Kyu and J. Rabe to 7 Kyu.

German Shogi Championship, Hannover

Nr	Name	Nat	Grade	ELO	1	2	3	4	5	Pts	+/-	
1	Wartlick	Karl	D	5 Kyu	1450	4+	3+	13+	6+	2-	4	+127
2	Drechsler	Jochen	D	2 Dan	1730	8+	7+	3-	12+	1+	4	+18
3	Maass	Stefan	D	1 Kyu	1905	9+	1-	2+	15+	7+	4	-12
4	Mirnik	Boris	D	3 Dan	2022	1-	9+	8+	13+	6+	4	-16
5	Hoffmann	Wolfgang	D	3 Kyu	1421	15+	6-	14+	16+	11+	4	-2
6	Greb	Wolfgang	D	1 Kyu	1559	17+	5+	11+	1-	4-	3	-2
7	Engelhardt	Alexander	D	2 Kyu	1577	14+	2-	18+	11+	3-	3	-7
8	Coria-Espada	Florencio	D	6 Kyu	1218	2-	18+	4-	14+	15+	3	+8
9	Schäfer	Norbert	D	7 Kyu	1269	3-	4-	17+	19+	12+	3	+35
10	Sprenger	Bernd	D	1 Kyu	1531	16+	11-	12-	17+	13+	3	-24
11	Rose	Bernd Oliver	D	6 Kyu	1051	12+	10+	6-	7-	5-	2	+73
12	Majewski	Thomas	D	2 Dan	1699	11-	16+	10+	2-	9-	2	-49
13	Dreblow	Leo	D	2 Kyu	1430	18+	19+	1-	4-	10-	2	-20
14	Snatzke	Raymond Georg	D		1102*	7-	17+	5-	8-	18+	2	
15	Többens	Daniel	D		737*	5-	0+	19+	3-	8-	2	
16	Krauß	Ulrich	D	9 Kyu	817	10-	12-	0+	5-	19+	2	+0
17	Rama	Hendrik	D	7 Kyu	1085	6-	14-	9-	10-	0+	1	-22
18	Haug	Bernhard	D		741	13-	8-	7-	0+	14-	1	-10
19	Tautorat	Guido	D		400*	0+	13-	15-	9-	16-	1	

Promoting K. Wartlick Karl to 3 Kyu, N. Schäfer to 5 Kyu and B. Haug to 13 Kyu.

French Open Championship, 2002-03-03

Nr	Name	Nat	Grade	ELO	1	2	3	4	5	6	Pts	+/-	
1	Mirnik	Boris	D	3 Dan	2006	5+	3-	4+	7+	2+	6+	6	+46
2	van Oosten	Arend	NL	4 Dan	2126	9+	4+	3+	6-	1-	8+	5	-5
3	Cheyamol	Eric	F	4 Dan	2199	7+	1+	2-	5-	6+	10+	5	-8
4	Ono	Yoichi	JP	1 Dan	1746	6+	2-	1-	11+	7+	5+	5	+58
5	Uemura	Yoshiyuki	JP	4 Dan	2226	1-	8+	7-	3+	9+	4-	4	-40
6	Tsugawa	Takahisa	JP	3 Dan	1938*	4	18+	9+	2+	3-	1-	4	
7	Pottier	Frederic	F	3 Dan	1955	3-	11+	5+	1-	4-	14+	4	-9
8	Schamelhout	Emmanuel	F	1 Kyu	1529	14+	5-	10+	13+	15+	2-	4	+17
9	Schmidt	Guillaume	F	3 Dan	1781	2-	12+	6-	18+	5-	16+	4	-9
10	Weimann	Christophe	F	1 Kyu	1608	15+	13+	8-	12+	18+	3-	4	-11
11	Stuifbergen	Jan	NL	8 Kyu	1049	17+	7-	16+	4-	13+	18+	4	+44
12	Camacho	Eddy	F	9 Kyu	976	22+	9-	17+	10-	14-	19+	3	-2
13	Osmont	Fabien	F	9 Kyu	922	20+	10-	19+	8-	11-	21+	3	-6
14	Yoshida	Kazuhide	JP		1104*	8-	22+	18-	20+	12+	7-	3	
15	Debrieu	Claude	F	11 Kyu	811	10-	17+	20+	19-	8-	0+	3	-10
16	Marquand	Jean-Christophe	F		826*	18-	19+	11-	21+	0+	9-	3	
17	Ishikawa	Yasushi	JP		627*	11-	15-	12-	0+	19+	20+	3	
18	Guzek	Florian	F	4 Kyu	1309	16+	6-	14+	9-	10-	11-	2	-24
19	Mallet	Francois	F		622*	0+	16-	13-	15+	17-	12-	2	
20	Flotte	Antoine	F		400*	13-	0+	15-	14-	21-	17-	1	
21	Jodet	Luc	F		509*	0-	0-	0-	16-	20+	13-	1	
22	Ishikawa	Hiroshi	JP		400*	12-	14-	0-	0-	0-	0-	0	

Promoting J. Stuifbergen to 7 Kyu.

Ukraine Shogi Open 2002: 2002-03-31

Nr	Name	Nat	Grade	ELO	1	2	3	4	5	Pts	+/-	
1	Shevchuk	Viktor	UA	1282	4+	5+	6+	2+	3+	5	+41	
2	Godai	Hiroki	JP	1337*	5+	6+	3+	1-	4+	4		
3	Ryasnyanskaya	Viktoria	UA	7 Kyu	1279	6+	4+	2-	5+	1-	3	-21
4	Shapko	Dmitriy	UA	813*	1-	3-	5+	6+	2-	2		
5	Shevshuk	Taras	UA	430*	2-	1-	4-	3-	6+	1		
6	Shevchuk	Sofiya	UA	400*	3-	2-	1-	4-	5-	0		

Promoting V. Shevchuk to 6 Kyu.

International Austrian Shogi Championships, Graz: 2002-04-06/07

Nr	Name	Nat	Grade	ELO	1	2	3	4	5	6	Pts	+/-	
1	Schnider	Gert	A	3 Dan	2047	10+	6+	4+	2+	7+	3+	6	+7
2	Pfaffel	Thomas	A	1 Dan	1858	13+	5+	3+	1-	12+	6+	5	+0
3	Dietmayer	Marco	A	1683*	7+	14+	2-	6+	4+	1-	4		
4	Neumaier	Andreas	A	1542*	9+	8+	1-	5+	3-	10+	4		
5	Korsner	Sven-Erik	S	5 Kyu	1221	12+	2-	16+	4-	8+	7+	4	+27
6	Staberhofer	Rainer	A	1418*	11+	1-	9+	3-	10+	2-	3		
7	Lukas	Wolfgang	A	1138	3-	10+	15+	8+	1-	5-	3	+0	
8	Hingley	Peter	GB	9 Kyu	893	15+	4-	11+	7-	5-	16+	3	+38
9	Itzenthaler	Jürgen	A	1122*	4-	16-	6-	11+	15+	17+	3		
10	Neubauer	Jakob	A	823	1-	7-	13+	14+	6-	4-	2	+31	
11	Fahrner	Petra	A	1146	6-	12+	8-	9-	13-	15+	2	-100	
12	Schmied	Horst	A	597*	5-	11-	18+	15+	2-	13-	2		
13	Gomilschak	Martin	A	591	2-	15-	10-	0-	11+	12+	2	+46	
14	Pesorda	Ivan	A	1049*	16+	3-	0-	10-	17+	0-	2		
15	Wetzel	Roland	A	545*	8-	13+	7-	12-	9-	11-	1		
16	Schmid	Wolfgang	A	1426	14-	9+	5-	0-	0-	8-	1	-118	
17	Gruber	Alexander	A	400*	0-	0-	0-	0-	14-	9-	0		
18	Leitner	Christoph	A	400*	0-	0-	12-	0-	0-	0-	0		

Promoting W. Lukas to 8 Kyu, J. Neubauer to 12 Kyu, P. Fahrner to 9 Kyu, M. Gomilschak to 15 Kyu and W. Schmid to 6 Kyu.

German championship play off, Berlin: 2002-04-13/14

Nr	Name	Nat	Grade	ELO	1	2	3	4	5	Pts	+/-	
1	Mirnik	Boris	D	3 Dan	2052	5+	0+	4+	2+	3+	5	+10
2	Wartlick	Karl	D	3 Kyu	1577	0+	3+	5+	1-	4+	4	+54
3	Maaß	Stephan	D	1 Kyu	1893	4+	2-	0+	5+	1-	3	-19
4	Drechsler	Jochen	D	2 Dan	1748	3-	5+	1-	0+	2-	2	-24
5	Hoffmann	Wolfgang	D	3 Kyu	1419	1-	4-	2-	3-	0+	1	-13

Promoting K. Wartlick to 2 Kyu and S Maaß to 1 Dan.

Dutch qualification Shogi Forum, group B: 2002-04-20¹

Nr	Name	Nat	Grade	ELO	1	2	3	Pts	+/-	
1	Boekschoten	Michiel	NL	3 Dan	1696	3+	2-	3+	2	+11
2	Litjens	Mathijs	NL	3 Dan	1781	0+	1+	0-	2	+9
3	Gorissen	Theo	NL	2 Dan	1644	1-	0+	1-	1	-20

¹ De hier getoonde volgorde komt niet overeen met de einduitslag van het kwalificatie-toernooi.

Dutch qualification Shogi Forum, group C: 2002-04-20¹

Nr	Name	Nat	Grade	ELO	1	2	3	4	Pts	+/-	
1	Blommers	Joost	NL	1 Kyu	1383	0+	3+	2-	3+	3	+18
2	Haaksma	Henk	NL	1 Kyu	1617	0+	4+	1+	0-	3	+6
3	Blommers	Peter	NL	3 Kyu	1346	0+	1-	4+	1-	2	-19
4	Stuifbergen	Jan	NL	7 Kyu	1093	5+	2-	3-	0-	1	-8
5	Schaafsma	Siebren	NL		400*	4-	0-	0-	0-	0	

Pullach/Munich Tournament : 2002-04-26 - 2002-04-27

Nr	Name	Nat	Grade	ELO	1	2	3	4	5	6	Pts	+/-
1	Miyata	Toshio	JP	7 Pro	2730*	7+	5+	4+	10+	9+	15+	8
2	Tamura	Kosuke	JP	5 Pro	2677*	8+	3+	11+	6+	14+	12+	8
3	Schnider	Gert	A	3 Dan	2054	13+	2-	10+	7+	5+	6+	7 +20
4	Drechsler	Jochen	D	2 Dan	1724	11-	7+	1-	13+	8+	5+	6 +38
5	Theeuwien	Marc	NL	4 Dan	2092	6+	1-	19+	8+	3-	4-	5 -23
6	Pfaffel	Thomas	A	1 Dan	1858	5-	13+	12+	2-	10+	3-	5 +4
7	Wartlick	Karl	D	2 Kyu	1631	1-	4-	13+	3-	25+	16+	5 +7
8	Gorissen	Theo	NL	2 Dan	1624	2-	11+	15+	5-	4-	14+	5 +17
9	Faldon	Dave	GB	6 Kyu	1289	28+	10-	31+	12+	1-	11+	5 +54
10	Engelhardt	Alexander	D	2 Kyu	1570	12-	9+	3-	1-	6-	22+	4 -9
11	Roquas	Frans	NL	2 Dan	1746	4+	8-	2-	14-	24+	9-	4 -33
12	Neumaier	Andreas	A		1542	10+	17+	6-	9-	20+	2-	4 -9
13	Someno	Shinobu	JP	1 Dan	1731	3-	6-	7-	4-	23+	24+	4 -35
14	Mensching	Günther	DE		1723*	22+	24+	25+	11+	2-	8-	4
15	Hingley	Peter	G	9 Kyu	931	32+	28+	8-	19-	27+	1-	4 +54
16	Coria-Espada	Florencio	D	6 Kyu	1226	19-	22-	29+	25+	17+	7-	4 +4
17	Patterson	Stuart	GB	7 Kyu	1200	21+	12-	26-	32+	16-	23+	4 -25
18	Rama	Hendrik	D	7 Kyu	1063	26+	19-	24-	23-	28+	27+	4 +13
19	Rossmannith	Alexander	D		1396*	16+	18+	5-	15+	0-	0-	4
20	Comesse	Fabrice	F	11 Kyu	906	27+	33+	23-	26+	12-	30+	4 +36
21	Marian	Marc	D		1205*	17-	29+	22+	27+	0-	0-	4
22	Marchio	Enrico	D		1247*	14-	16+	21-	31+	26+	10-	3
23	März	Bernhard	D		1060*	29+	30-	20+	18+	13-	17-	3
24	Rösch	Wilfried	D		1350*	34+	14-	18+	28+	11-	13-	3
25	Tappe	Jochen	D		1138*	33+	31+	14-	16-	7-	28+	3
26	Krauß	Ulrich	D	9 Kyu	817	18-	32-	17+	20-	22-	29+	3 +14
27	Böttcher	Hans-Joachim	D	9 Kyu	935	20-	34+	30+	21-	15-	18-	3 -43
28	Matsumoto	Yuji	JP	5 Kyu	1067	9-	15-	34+	24-	18-	25-	2 -53
29	Többens	Daniel	D		737	23-	21-	16-	30+	31+	26-	2 +0
30	Tomerius	Kai	D		687*	31-	23+	27-	29-	33+	20-	2
31	Waltenberger	Udo	D		690*	30+	25-	9-	22-	29-	34+	2
32	Kegelmann	Mathias	D		917*	15-	26+	33+	17-	0-	0-	2
33	Haug	Bernhard	D	13 Kyu	731	25-	20-	32-	34+	30-	0+	2 -30
34	Shan	Kunqin	S		400*	24-	27-	28-	33-	0+	31-	1

Promoting T. Pfaffel to 2 Dan, K. Wartlick to 1 Kyu, D. Faldon to 5 Kyu, A. Neumaier to 4 Kyu, F. Comesse to 9 Kyu and D. Többens to 13 kyu.

Books Review

Peter Blommers

Kondō Masakazu "Gokigen Nakabisha Senpo" (Good-humoured Central Rook Opening), Nihon Shogi Renmei 1300 Yen (+tax).

This nice little book in the new Power Up Series (bodybuilder's arm and biceps as logo) is about an adventurous style of Black Central Rook. The main feature of this opening is the fact that the Bishop's diagonal stays open (as opposed to normal Ranging Rook), and moreover the head (square in front) of the Bishop remains undefended. All kinds of open lines and according tactics determine play. The first moves are 1.P7f P3d 2.P1f P8d 3. P5f P8e 4.R5h, Black's second move P1f being a conscious attempt to give the initiative to White (if immediately 2.P5f White plays Bx8h+ 3.Rx8h B=5g and has two lines for promoting his Bishop while in the book line 3.P5f comes after P8d and the Bishop only has one line of retreat, so after B=5g Black can counterdrop B=6h and the promotion is lost).

The chapters are:

1. Ultra-quick Attack
2. Quick Attack
3. Slow Attack
4. Muscle Shogi
5. Peculiar Lines
6. Next Move Problems

Appendix: 10 example games.

This opening is currently Marc Theeuwens' favourite and the book is still in stock in the Shogi Depot (€16.50).

Habu Yoshiharu "Habu's new Shogi Proverbs (105)". Nihon Shogi Renmei 1300 Yen (+tax).

Fortunately, only 40 of the 105 proverbs are new ones, several of which were known as tactical devices already, anyway, but which had never been elevated to proverb status. These include »Defend the head of the Bishop with a Gold«. The book is only useful if you can read Japanese, and the proverbs will be featured in future articles anyway.

Efficiency

Peter Blommers

I said earlier that players sometimes exchange Bishops by rotating them along two axes, but Frank Wouters explained to me that one axis (the third one) suffices. A situation often can be handled in different ways and I remember really to have gone through the motions of rotating the piece along two axes. It reminds me of how rigid and of limited intelligence I am (but not socially!).

Visit of Tokunaga Hiroyuki

Peter Blommers

End of March we had a surprise visit of Tokunaga Hiroyuki, a young player from Nagoya, recently graduated as a computer scientist (specialization: lung diseases; his hobbies are: skiing, snowboarding, and Shogi). First he played at my house (he won 2-1), later at the club that day (he lost 0-2 against Jeroen Tiggelman 1-dan), and later in the week he played at Marc Theeuwen's house and lost 0-2 against our 4-dan champion. I estimate his strength at 1-kyu, and here give my sole win against him.

Black: Tokunaga Hiroyuki

White: Peter Blommers

1.R6h P3d 2.P6f R3b 3.P7f K6b 4.P6e G45b 5.K4h K7b 6.K3h G66b 7.G65h P3e 8.Bx2b+ Sx2b 9.B'4e P4d 10.B5f P3f 11.S2h Px3g+ 12.Sx3g B'5e 13.P4f Bx9i+ 14.P6d L'6f 15.Px6c+ G5x6c 16.Rx6f +Bx6f 17.L'6g +Bx5f 18.Px5f P'6d 19.P'6e Px6e 20.P'6d G5d 21.B'4c R3a 22.Lx6e R'6i 23.P6c+ Gx6c 24.Lx6c+ Rx6c+ 25.G'3b P'3f 26.Sx3f P'3e 27.Gx3a Sx3a 28.Bx2a+ Px3f 29.+Bx3a S'3g 30.Nx3g Px3g+ 31.Kx3g N'2e 32.K3f P'3e 33.Kx2e G'2d 34.K2f B'1e 35.K1f B3g+ Black resigns

Hiroyuki upon my asking came up with a nice explanation why there are two *gyoku* (King with dot) in Shogi diagrams: in diagrams it is unclear who is the strongest player, so both Kings are made *weak*.

Shogi Agenda¹

8-9 juni, Stuttgart Shogi Open 2002

Lokatie: Forum 3, Gymnasiumstr.21, D-70173 Stuttgart
Toernooivorm: 6 ronden McMahon of Zwitsers (afhankelijk van het aantal deelnemers)
Tijdschema: zaterdag: inschrijven 10.30 uur. 1ste ronde: 11.00 uur
Overnachting: 1. Hotel am Feuersee, Johannstr.2, 70176 Stuttgart, Tel. +49 711 619540 Fax. +49 711 61954160, 1-persoonskamer: €65, 2-persoonskamer: vanaf €70
2. Hotel Wartburg, Lange Str.49, 70174 Stuttgart, Tel. +49 711 20450 Fax. +49 711 204550, 1-persoonskamer: €82 - €87, 2-persoonskamer: vanaf €125
Inschrijfgeld: €10.00
Informatie: Alexander Engelhardt, Urbanstr.89, D-73728 Esslingen
Tel. & Fax. +49 711 3166491, alxengelhardt@aol.com

8-9 juni, 1st Trollhatten Open

Lokatie: De lokale schaakclub, Torparegatan 17, Trollhattan (Zweden)
Toernooivorm: 6 ronden (45 min + 40s byo-yomi)
Tijdschema: zaterdag: inschrijven 09.45 uur. 1ste ronde: 10.00 uur
zondag: 4de ronde 09.00 uur, prijsuitreiking 17.30 uur
Overnachting: Jeugdhôtel Gula Villan & Tjadern
Tingvallavagen 12, Trollhattan, Tel +46 520 12960
Inschrijfgeld: SEK 100
Informatie: Robert Soderberg, Tel +46 70 2968986
sveriges_shogiforbund@hotmail.com

1 Zie ook: <http://www.shogi.net/fesa/calendar.html>

15-16 juni, 7de Rikai Toernooi

Lokatie: "Buurtcentrum Limbrichterveld", Eisenhowerstraat 724, Sittard
Tel. 046 4510084

Toernooivorm: 6 ronden MacMahon

Tijdschema: zaterdag: inschrijven 09.45 uur. 1ste ronde: 10.00 uur
zondag: 5de ronde 09.30 uur, prijsuitreiking 17.00 uur

Overnachting: 1. Hotel Auvelebergh, Wielewaalstraat 2, 6135 EN Sittard
Tel. 046 4520999, Fax. 046 4521010
2. Hotel De Limbourg, Markt 22, 6131 EK Sittard
Tel. 046 4518151, Fax. 046 4523486 (<http://www.hoteldelimbourg.nl/>)

Inschrijfgeld: €11.50

Informatie: Hugo Hollanders: Tel. 043-3883873, h.hollanders@merit.unimaas.nl
Jan Oosterwijk: Tel. 046-4370434, j.oosterwijk@freeler.nl

22-25 augustus, 18th European Shogi Championship (ESC)/ 4th Worldwide Open Shogi Championship (WOSC)

Lokatie: R.I.K.A.B.
Prins Boudewijnstr. 71 (Rue Du Prince Boudouin)
Ganshoren, Brussel (België), Tel. +32-2-4282013

Toernooivorm: 9 ronden (3 op vrijdag, 4 op zaterdag, 2 op zondag)
donderdagavond 22 aug.: Snelshogi toernooi

Overnachting: Voor €100 krijgt elke deelnemer die lid is van de NShB en zich via de bond aanmeldt:

- 3 nachten in een éénpersoonskamer
- volpension voor 3 dagen
- deelname aan het ESC/WOSC
- gratis koffie en thee tijdens de speelronden
- toegang tot een analyse-ruimte en een computerruimte met gratis internet toegang

Informatie: <http://www.shogi.net/esc-2002.html>

Aanmelden: Leden van de NShB kunnen zich ofwel via Tom Kau of Hugo Hollanders opgeven:

1. indien de aanmelding uiterlijk vrijdag 12 juli plaatsvindt, bedragen de kosten van deelname €100,
2. indien de aanmelding na vrijdag 12 juli doch voor zaterdag 2 augustus plaatsvindt, bedragen de kosten van deelname €125,
3. aanmelden na vrijdag 2 augustus kan alleen rechtstreeks via de organisatie, waarbij de deelnemer zelf voor zijn overnachting en maaltijden moet zorgen.

De NShB stelt zich financieel aansprakelijk voor de deelnamekosten van elke speler die zich via de bond aanmeldt. Bij niet-deelname van een speler zal de NShB de vereiste €100 of €125 aan de organisatie moeten betalen. Derhalve stelt de NShB als voorwaarde dat een aanmelding pas dan definitief is als de speler het vereiste deelnamegeld voor vrijdag 12 juli resp. vrijdag 2 augustus op de rekening van de NShB heeft overgemaakt. Bij niet-deelname zal dit geld niet worden geretourneerd. Bovendien wordt een aanmelding alleen geaccepteerd als de speler d.m.w. het tijdig overmaken van zijn lidmaatschapsgeld voor 2002 aan zijn contributieverplichtingen heeft voldaan.

Oplossingen Tsume -Shogi

- 1: G'2b K4b B'3c Kx3c G3c 4: +B3a K1b +R1d Nx1d N'2d
 2: G'1a Sx1a +R2a Kx2a +R3b 5: +R4a Kx4a B2c+ +Bx2c G'3a
 3: G'3d Kx3d B2c+ +Bx2c R4d+ 6: B'1e Nx1e B'2d +Rx2d +R3b

Kwalificatie-toernooi Shogi Forum: S'5h K5g G'6g K4h S'3g K3i S4i+ Kx4i
 +R5h K3i +Rx3h Bx3h G'4h K2i Gx3h K1h S2h+

Current Title Holders

The following gives an overview of the current title holders within Pro Shogi. Meijin Moriuchi holds the most important title, Habu holds most titles, including the prestigious Ryu-O title.

61st Meijin Match	April-May 2002	T.Maruyama - T. Moriuchi	0-4
14th Ryu-O Match	Oct-Nov 2001	T.Fujii - Y. Habu (ch)	1-4
73rd Kisei Match	June-Aug 2002	M. Goda - Y. Sato (ch)	...
42nd Oi Match	July- Aug 2001	Y. Habu - N. Yahiski (ch)	4-0
49th Oza Match	Sept-Oct 2001	Y. Habu - T. Kubo (ch)	3-1
51st Osho Match	Jan-March 2002	Y. Habu - Y. Sato (ch)	2-4
27th Kio Match	Febr-March 2002	Y. Habu - Y. Sato (ch)	3-1

Toernooipartijen

Joost Blommers - Marc Theeuwen NK 2002, Kwartfinale

1.P2f P3d 2.S4h P4d 3.P2e B3c 4.G45h P9d
 5.P9f R4b 6.K6h S3b 7.K7h K6b 8.S6h S7b
 9.P7f (A) K7a 10.S7g (B) K8b 11.P5f S4c
 12.B7i R2b 13.P1f G45b 14.S5g P4e (C) 15.P4f
 Px4f 16.Sx4f R4b 17.P'4e S5d 18.R4h P6d
 19.P6f (D) P7d 20.G6g G6c 21.P3f N7c 22.N3g
 (E) P1d 23.S5e Sx5e 24.Px5e Bx5e 25.B4f
 Bx4f 26.Rx4f B'5e 27.R5f Bx3g+ (F) 28.S'4d
 P5d 29.B'4c Rx4c 30.Sx4c N'5e 31.G5g B'3h
 32.R'2b (G) Bx5f+ 33.Gx5f R'3h 34.S6h S'6g
 35.K8h Sx6h+ 36.Gx6h Rx6h+ 37.K9g S'8h
 zwart geeft op



- (A) Merkwaardig dat de loper diagonaal nu pas wordt geopend. Maar hoe is dat af te straffen?
- (B) Tamelijk doorzichtig. Beter is om eerst P5f te spelen.
- (C) Beter is R4b.

- (D) De zwarte koningsstelling is nu erg open en kwetsbaar.
- (E) Gevaarlijk. Zwart kan nl. niet P3e spelen door de dreiging Px3e Sx3e P'3f. De ontwikkeling van het zilver wordt hierdoor belemmerd. Nu zou het plan moeten zijn R2h-R2f om de kop van het paard te beschermen.
- (F) De afruil op 5e pakt erg gunstig uit voor wit; reden te meer om N3g te wantrouwen.
- (G) G6h is veel beter, nu is het dweilen met de kraan open.

**Frans Roquas - Marc Theeuwen
NK 2002, Halve finale**

1.P2f P3d 2.P7f P4d 3.S4h P9d 4.P9f R4b 5.P5f K6b 6.K6h S7b 7.K7h K7a 8.G45h K8b 9.S6h B3c 10.P1f S3b 11.S65g G45b 12.G66h S4c 13.P2e P6d 14.P3f P5d 15.P3e R3b 16.Px3d Sx3d 17.P2d Px2d 18.R3h G4c 19.S4f (A) P4e 20.Bx3c+ Nx3c 21.Sf5g P'3e 22.B'4a R2b 23.P'2c R4b 24.B8e+ Sx2c 25.Rx3e B'4d 26.R3i Bx9i+ 27.N7g +B9h 28.+B8f (B) L'8d 29.N8e R6b 30.S6f P'3d 31.S7g P2e 32.S8h P2f 33.S9i +Bx9i 34.Rx9i P2g+ 35.S5g P'2h 36.N1g +Px1g 37.B'2f N'3e 38.Bx1g N2e 39.Bx2h S'3g 40.Bx3g Nx3g+ en wit wint

	9	8	7	6	5	4	3	2	1	
每	皇	王	飛	王					皇	一
		王	飛	飛						二
		飛	飛		王		飛	飛		三
	皇		飛	飛		飛				四
	桂				飛	王				五
	步	馬	步		步				步	六
	步		步	銀	步	王				七
			玉	金	金					八
飛									香	九

- (A) Beter is Rx3d Gx3d S'4c.
- (B) Erg goed tegen een latere L'8d.

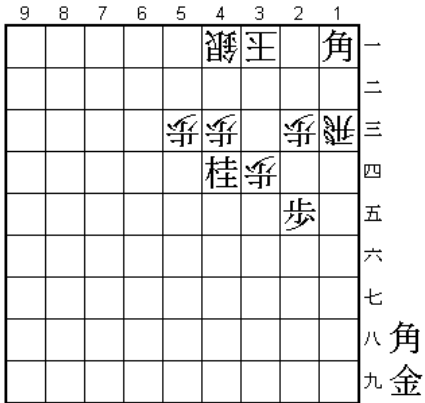
**Arend van Oosten - Marc Theeuwen
NK 2002, Finale**

1.P2f P3d 2.P2e B3c 3.P7f P4d 4.S4h P9d 5.P9f S3b 6.P5f R4b 7.K6h K6b 8.K7h S7b 9.G45h K7a 10.S6h K8b 11.P3f G45b 12.S65g P5d 13.G66h S4c (A) 14.P4f P6d 15.S3g P1d 16.S2f P4e (B) 17.Px4e Bx8h+ 18.Kx8h S3b (C) 19.N3g N3c 20.B'3a Nx4e 21.Nx4e (D) Rx4e 22.P'4f R4b 23.P6f R4a (E) 24.B2b+ S4c 25.+Bx2c R2a 26.+B3c P'4b (F) 27.P3e (G) Px3e 28.N'2c P3f 29.P2d B'3g 30.Sx3g Px3g+ 31.R2e P'3b 32.Nx1a+ Px3c 33.+Nx2a S3d 34.R2i S'3h 35.R7i +P4g 36.R'3a +Px5h 37.Gx5h G'4g 38.Gx4g Sx4g+ 39.S6h +S5h 40.S7g B'5g 41.R2i N'8e 42.G'6g Nx7g+ 43.Nx7g Bx4f+ en wit wint

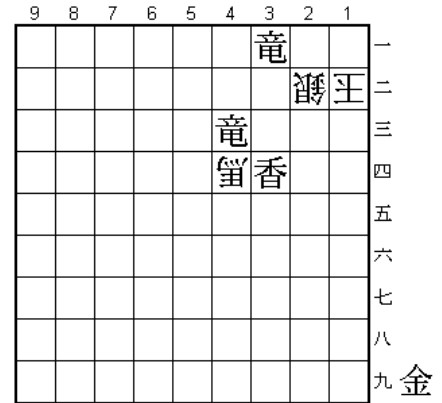
	9	8	7	6	5	4	3	2	1	
飛	皇	王		王			飛	桂		一
飛		王	飛		王	飛				二
飛		飛	飛				飛			三
	飛			飛	飛		飛	步	飛	四
										五
	步		步	步	步	步				六
		步	桂	金					步	七
		玉			飛					八
香								飛	香	九

- (A) Beter is P6d. Dit houdt meer opties open.
- (B) Niet goed. Beter is R3b.
- (C) Geeft aan dat S4c niet goed was.
- (D) Niet Bx4b+. Daarna volgt Gx4b Nx4e P'4d.
- (E) Meteen 22.R4a is veel beter.
- (F) Voorkomt +Bx4c Gx4c S'3b.
- (G) Beter is N'2c.

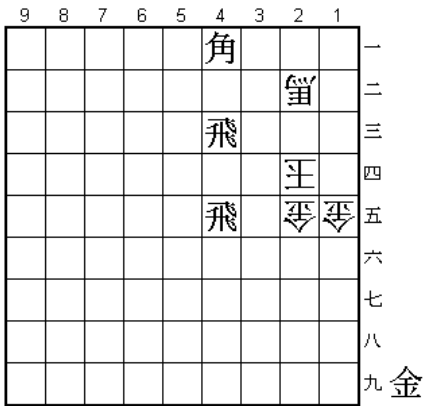
Tsume-Shogi



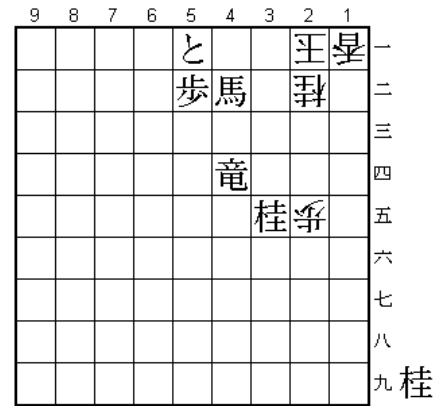
Tsume 1 (5)



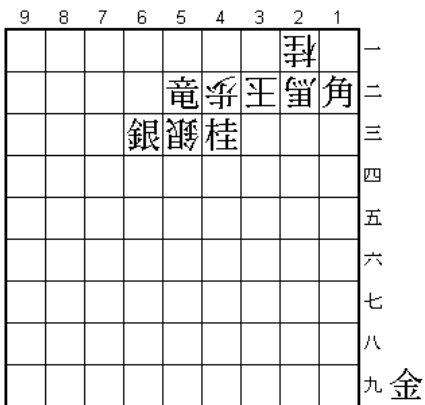
Tsume 2 (5)



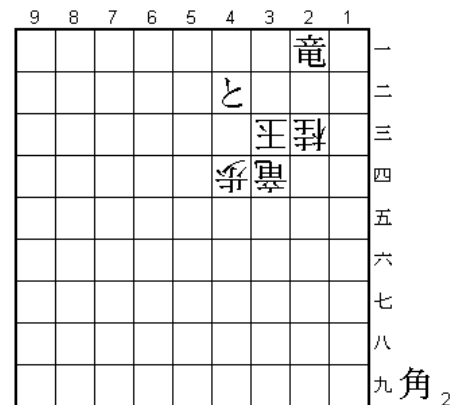
Tsume 3 (5)



Tsume 4 (5)



Tsume 5 (5)



Tsume 6 (5)

Bron: Shogi Sekai